

Nonsuch Park Solar System Walk

An update by the Ewell Astronomical Society to the
Nonsuch Park Joint Management Committee 16th June 2025

1. Background

At the JMC Meeting in March 2025 the Ewell Astronomical Society (EAS) provided a second update on a proposal to install a solar system themed walk within the park. Following consideration, the Committee unanimously resolved to:

Support and approve the updated proposal for a Solar System Exploration Walk in Nonsuch Park, as at appendix 1 to the report, subject to a successful funding application to Your Fund Surrey¹

- The walk would entail a walking trail covering a distance of at least 1 kilometre within the park
- Information points would be situated at scale distances to the main objects within the solar system
- Information would be delivered through a combination of printed signs, with supporting website pages linked by a QR code on the signs. Additionally, a leaflet could be made available from the mansion house, similar in nature to the one being used very successfully by the Nonsuch Voles
- This information will also feature other aspects of the park, such as an historical timeline and the sundial, and can support public engagement through outreach events held in the park

¹ As documented in the minutes of the JMC meeting 24 March 2025, s.33(1)

2. Funding

We received confirmation of our successful bid to Your Fund Surrey on the 7th of May. We are now obliged to deliver on this project within six months.

3. Mobilisation

We are now in the process of mobilising the project

- Suppliers of the furniture (signs and posts) have been contacted to confirm availability and costs. There has been no material change to the original estimated costs
- Whistlestop Arts have been engaged and we are working on a memorandum of understanding between ourselves in terms of detailed deliverables
- A budget tracking spreadsheet has been developed to ensure we keep within budget
- A project plan has been drafted to map out the key deliverables necessary over the six-month timeframe
- We have had an initial discussion with Nonsuch Voles who are very supportive of the project and even offered their assistance to help install the furniture

4. Signage

The original proposal was to install an A2-sized information board at each end of the walk, with A4 signs (including a QR code for additional web-based information) mounted on scaffold boards (38 x 225 mm).

Having secured the funding, and the kind offer of assistance to install the furniture by Nonsuch Voles, this has given us some additional headroom to allow an upgrade to the signage:

- The proposed A2-sized information boards can be upgraded to a more visually impactful A1 size. We should also be able to accommodate an additional cost of having the frames finished in a green colour rather than the standard anodised aluminium finish.
- The A4 signs can be installed on brown-coloured recycled plastic sleepers (80 x 230 mm). This will mean a more rigid support giving a much longer lifespan and lower maintenance cost compared to the originally proposed scaffold boards
- It has also been suggested that, subject to budget, we place an A4-sized post and sign in the other main car parks (London Road (north end) and Cheam) informing visitors of the walk and where to start it.

→ We would appreciate confirmation from the committee to undertake these upgrades.

5. The Route

The planned route still follows the original proposal – approximately 1.5 km from the London Road southern carpark to the mansion house.

- A survey walk was conducted to ensure suitability of the route, including the area in the immediate vicinity of the mansion house
- Some concerns had been raised about the availability of a mobile phone signal throughout the park in order to access the supplementary information available via a QR code. The survey walk indicated that a mobile phone signal was available along the entire route, albeit at a low-to-moderate signal strength, switching between 4G and 5G (for both EE and Vodafone networks)
- Information on the A1 signs at each end will be structured such that the walk can be undertaken in either direction
- At the mansion house end it is proposed to have the initial (A1-sized sign) in the periphery of the small car parking area directly outside of the mansion house/café. Appreciating the aspect of the front of the mansion house, it would be proposed to locate the first A4-sized board just through the gate from the front of the mansion house on Fir Walk
- The intermediate A4-sized signs would then be placed at scaled distances along the route, ending at the other A1-sized board adjacent to the car park
- As the inner planets' boards will be spaced very close together, the proposed 'starting' point with the Sun board would be at the car park end to avoid potential pedestrian congestion along Fir Walk, which can also be a busy traffic route
- Arrow markers would be placed at the junctions of this route.

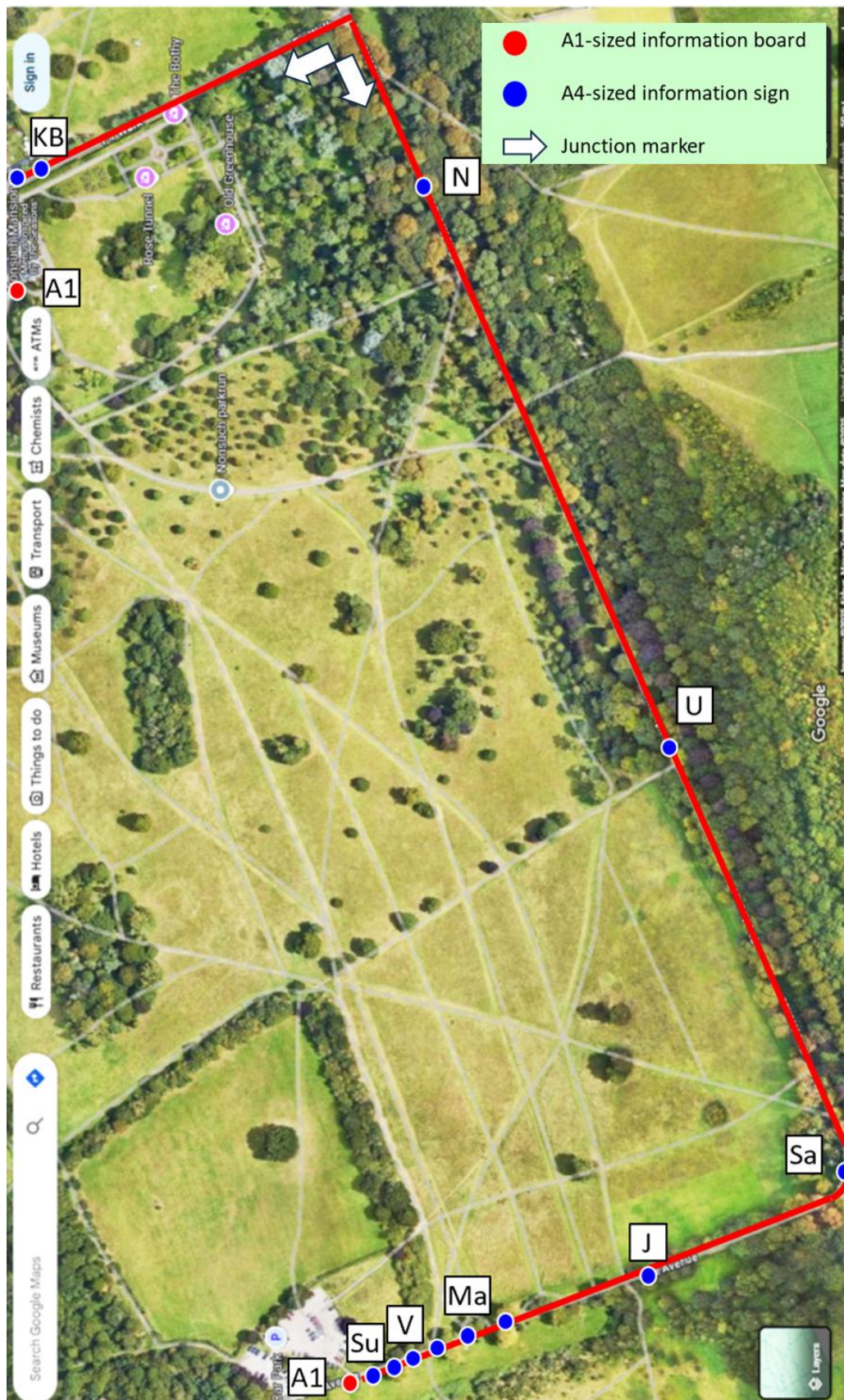
→We would appreciate confirmation from the committee that they are agreeable to the siting of these signs.

Please see the route maps on the following pages for an illustration of these points.

Finally, the Ewell Astronomical Society would like to express its appreciation to the JMC for their support for this initiative, and especially to Councillor McCormick for approving the provision of funds for this project from his Your Fund Surrey allocation outside of his division.

Map of the proposed solar system walk route within Nonsuch Park

This proposed route starts with the Sun board at the car park end.



Map of the alternative solar system walk route within Nonsuch Park

A reverse route is also an option, but it is felt it would potentially cause pedestrian congestion along Fir Walk, which can also be a busy traffic route.

